



Quantapoint Case Study

Confidential Client – Food & Beverage

Eastern US Location

Situation

A leading alcoholic beverage manufacturer was planning a weekend shutdown to demolish the existing manifold system and replace it with a new one.

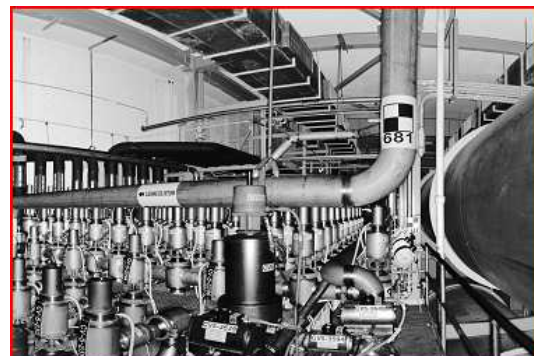


Challenge

The plant has capacity to produce over 6,000 cans and bottles per minute and is planned to be down for two days. It is required that by Monday morning the new manifold system will be installed and operational.

Solution

Quantapoint was selected to perform the existing condition documentation services. Our scope of work included scanning an existing manifold system that transfers fluid from storage vessels to various filling lines. Quantapoint performed laser scanning to create 3D images of the existing manifold system.



*Quantapoint 2D Laser Scan (Not a Picture)
Each Point is a Measurement*

Results

Quantapoint data was used to generate a 3D model to accurately locate tie-in points for filtered beer lines into the manifold and discharge piping from the manifold to the various filling lines. Quantapoint also laser scanned the new manifold system at the fabricator's shop prior to shipping. The laser scan data was imported into the 3D model to verify tie-in points and elevations as well as to verify that it physically fits within the allocated space. Several potential tie-in and other problems were identified and corrected while the equipment was still in the shop. Had Quantapoint not been used, these issues would have likely lead to a delay in startup, resulting in significant lost production.