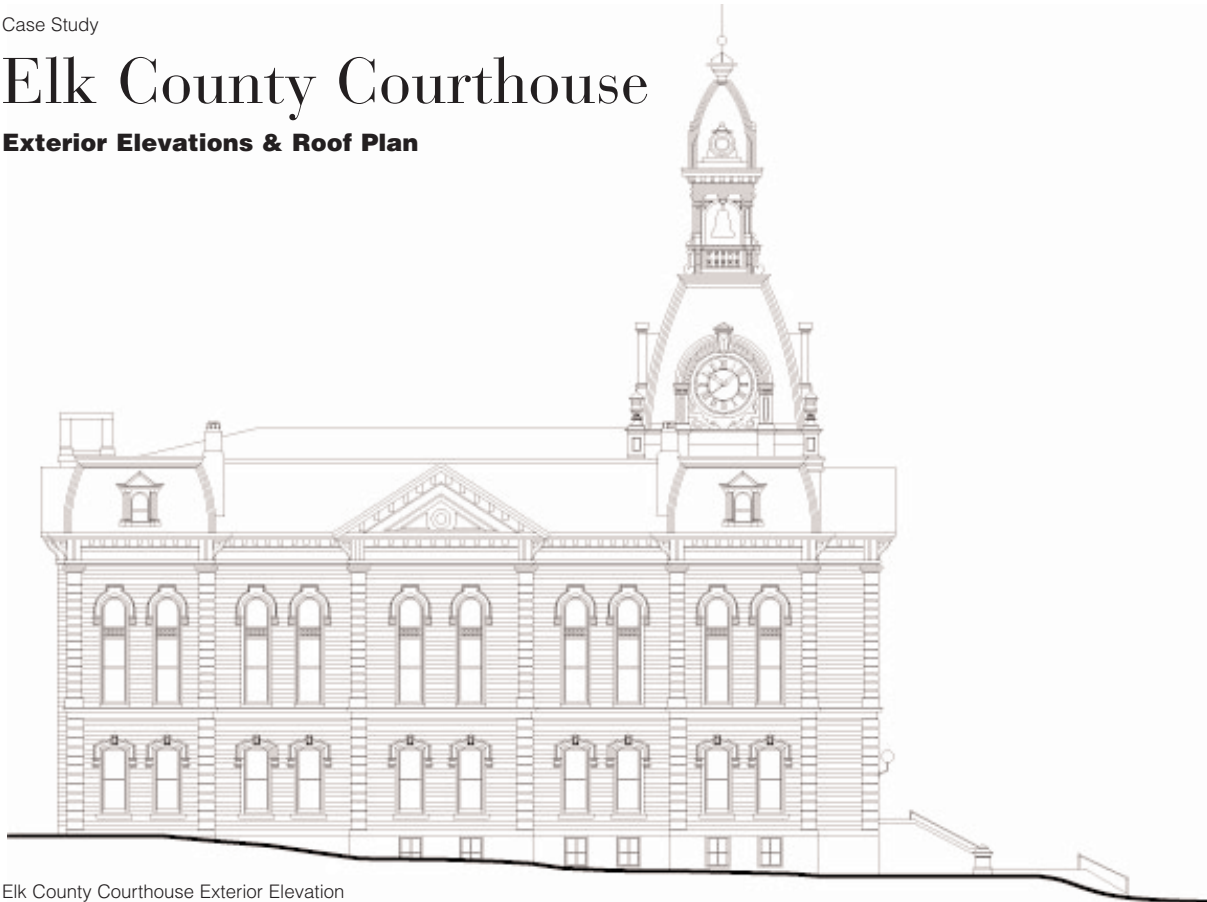


Elk County Courthouse

Exterior Elevations & Roof Plan



Elk County Courthouse Exterior Elevation



Location

Ridgway, PA

Architect

EADS Architects



Front Elevation

Background

The Elk County Courthouse was originally constructed during the 1890's. This red brick and stone structure has decorative window and gable detail as well as a slate mansard roof with a clock and bell tower. The courthouse has 3-stories above grade and one partially below grade. Quantapoint laser technology was used to document the exterior to evaluate and plan the renovation of the roof, gables, clock tower, bell tower and window detail.

Scope of Work

- Quantapoint technology was able to document the exterior of the Elk County Courthouse, including the clock tower and bell tower to a high level of detail. The bell and clock tower stand 60 feet above the roof line of the courthouse.
- Roof plans were also provided to assist in the renovation project.

Time Frame

The Quantapoint scanning team was on site for less than two days to capture the total data necessary for the exterior elevations. Quantapoint was able to provide the final deliverables in about two weeks.

Deliverables

- Exterior Elevations
- Roof Plan