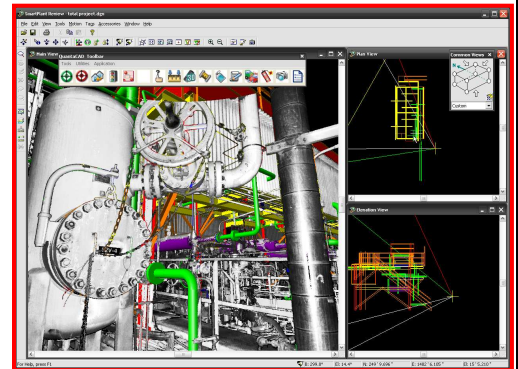




Improve Design Reviews by Embedding Laser Images in AVEVA Review and SmartPlant Review

Embedding Laser Images Directly in Review Packages Provides Photo-Realistic Views of an Existing Facility with Proposed Designs to Improve Understanding, Cut Review Time and Eliminate Rework from Clashes and Interferences

PITTSBURGH, PA (June 8, 2009) — Quantapoint (<http://www.quantapoint.com>) – provider of laser scanning technology and services that helps companies achieve [Zero-Defect Projects™](#) – today announced that photo-realistic Laser Images™ may be embedded directly in AVEVA Review and SmartPlant Review using [QuantaCAD 9.0](#). [QuantaCAD](#) enables 3D laser scan data to be accessed directly as photo-realistic Laser Images™ and high-definition Quantapoint [Laser Models™](#) (not fuzzy “point clouds”) within design software such as Autodesk AutoCAD, AVEVA PDMS, Bentley AutoPlant, Bentley Microstation V8XM, Intergraph PDS, Intergraph SmartPlant and more.



Using [QuantaCAD](#), Laser Images may be embedded directly in the review package view window, not as a separate window or “bubble view”. This enables proposed designs to be viewed more intuitively, quickly and easily than using difficult-to-visualize “point clouds”, hard-to-understand 2D drawings or idealized 3D CAD models. Some of the major benefits include:

- ✦ **Improved Understanding:** The operability and maintainability of a proposed design is more easily and better understood by cross-departmental teams before construction.
- ✦ **Faster Design Reviews:** A picture of the existing facility with the proposed design is worth a thousand words, which significantly shortens design reviews.
- ✦ **Minimize Remodeling:** Laser Images provide a more complete facility view, including details like small-bore piping and cable trays, which minimize the need to remodel.
- ✦ **Access Laser Models:** Laser Models integrate data from all Laser Images to provide detailed, high-definition solid “models” of facility when a 3D view is desired.
- ✦ **Eliminate Clashes:** Visually identify clashes with proposed designs in Laser Images or automatically clash designs against Laser Models.

By using [QuantaCAD](#) to put reality on the desktop and in design software, clients have typically been able to reduce remodeling time by 85% (by using [Laser Models](#) instead of CAD remodeling or as a basis to remodel), decrease design time by 60% (by accessing more complete and clear [Laser Models](#) and Laser Images for design) and cut rework from design clashes by 85% (by correcting clashes between the [Laser Models](#) and the new CAD design). If you are interested in finding out more about embedding Laser Images in AVEVA Review and/or SmartPlant Review using [QuantaCAD 9.0](#) or would like a demonstration, visit www.quantapoint.com/gp/contact or e-mail info@quantapoint.com.

About Quantapoint

Quantapoint provides laser scanning technology and services that help our clients achieve Zero-Defect Projects™. We [“digitize” facilities](#) using patented laser scanning technology and then use our award-winning [Laser Model™ technology](#) to create a high-resolution Digitized Facility™ that can be [accessed directly](#) or [within various CAD packages](#). Quantapoint also provides analysis, quality control, documentation and decision support services to [eliminate the most common sources of preventable project defects from across the project lifecycle](#). It is Quantapoint’s unique combination of innovative laser scanning technology and professional services that help our clients achieve Zero-Defect Projects™, [beating project budgets and schedules by 15% or more](#) and saving millions of dollars and thousands of man-hours. For more information on our technology and services, please visit www.quantapoint.com, e-mail info@quantapoint.com or call +1-412-653-0100.

###

For additional information, please contact:

Millie Brinkley, Director of Industry Relations
Quantapoint, Inc.
Telephone: (713) 936-0620
E-mail: mbrinkley@quantapoint.com

